

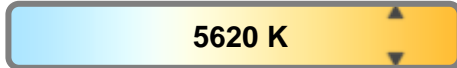
Light Efficiency:



Light Quality:



Color Temperature:



Output: 8136 lm

Peak: 966051 cd

Power: 918 W

PF: 1.0



Product Name:

Platinum 1200 Wash

Test:

CRI Value

Date:

1/23/2018

Note:

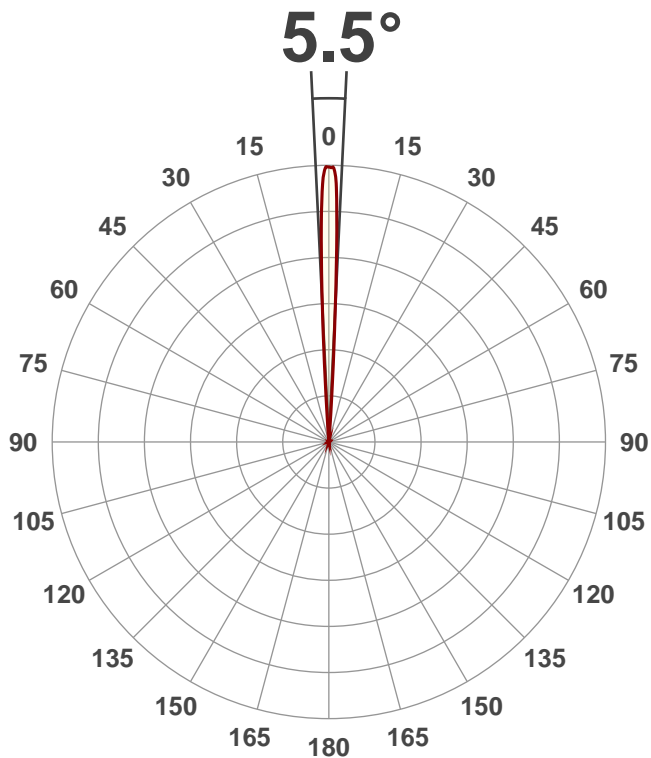
DMX on standard Value as follow:

Red @ 164

Green @ 190

Blue @ 0

White @ 255



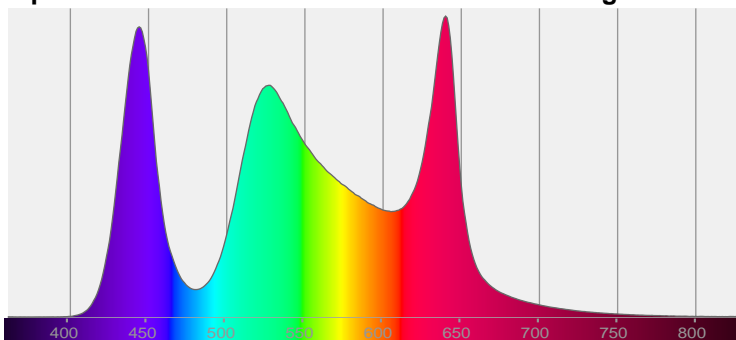
Beam Angle



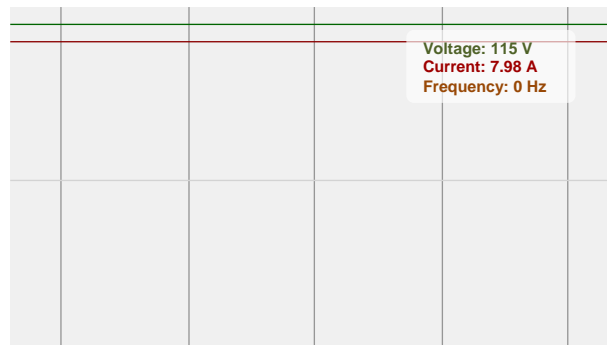
CIE 1931
x: 0.330
y: 0.355

Spectra

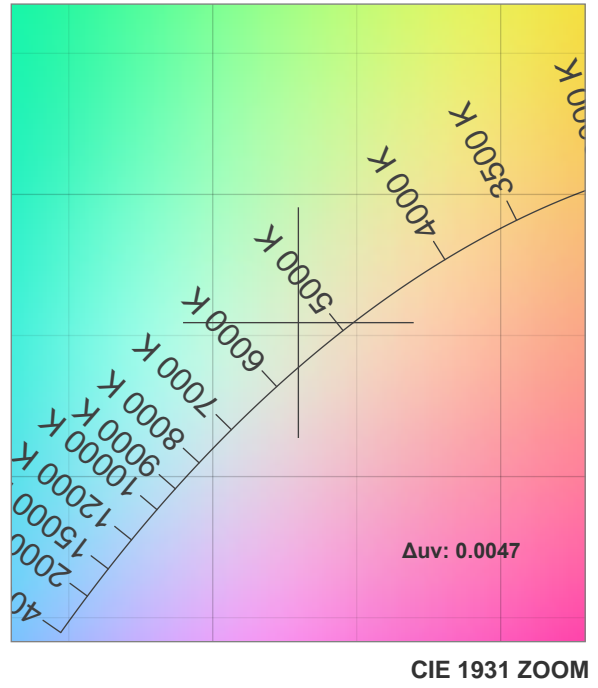
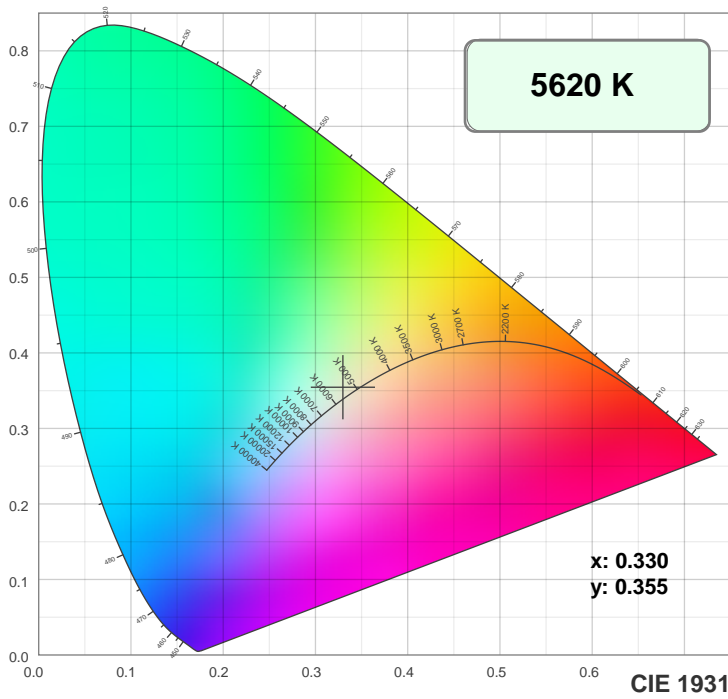
Dominant Wavelength: 572nm



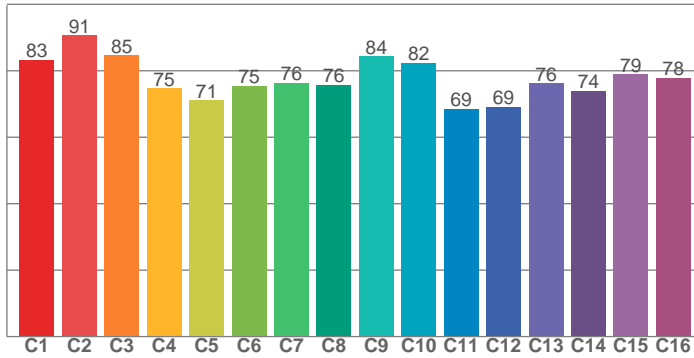
Power



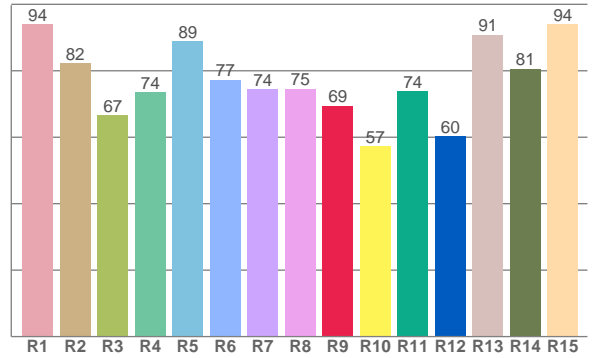
Color Details



TM30: 77.9



CRI: 79.0 (R1-R8)



CRI R values, only R1-R8 are used to calculate final CRI value

R1	R2	R3	R4	R5	R6	R7	R8	R9	R10	R11	R12	R13	R14	R15
94.1	82.2	66.6	73.5	89.0	77.3	74.4	74.6	69.5	57.3	73.8	60.3	90.8	80.6	93.9

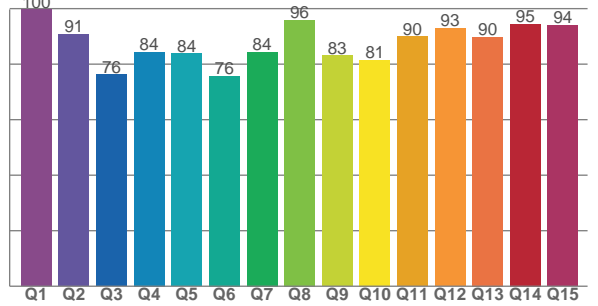
TM30 C Values, 16 binned values out of total of 99 C values

C1	C2	C3	C4	C5	C6	C7	C8	C9	C10	C11	C12	C13	C14	C15	C16
83.3	90.7	84.7	74.7	71.1	75.5	76.4	75.8	84.3	82.4	68.5	69.2	76.2	73.9	79.0	77.8

CQS Q Values

Q1	Q2	Q3	Q4	Q5	Q6	Q7	Q8	Q9	Q10	Q11	Q12	Q13	Q14	Q15
99.7	90.8	76.2	84.4	83.8	75.8	84.4	95.8	83.0	81.4	89.9	92.9	89.7	94.5	94.0

CQS: 85.9



Color Parameters

Color Temperature	Color Rendering Index	Red Component	Color Fidelity	Color Gamut	Color Quality Scale	Color Coordinate CIE 1931	Color Coordinate CIE 1931	Color Coordinate	Color Coordinate	Color Deviation from Black Body
CCT	CRI	CRI R9	TM30 Rf	TM30 Rg	CQS	x	y	u	v	Δuv
5620 K	79.0	69.5	77.9	109.6	85.9	0.330	0.355	0.200	0.323	0.0047

TM30 Details

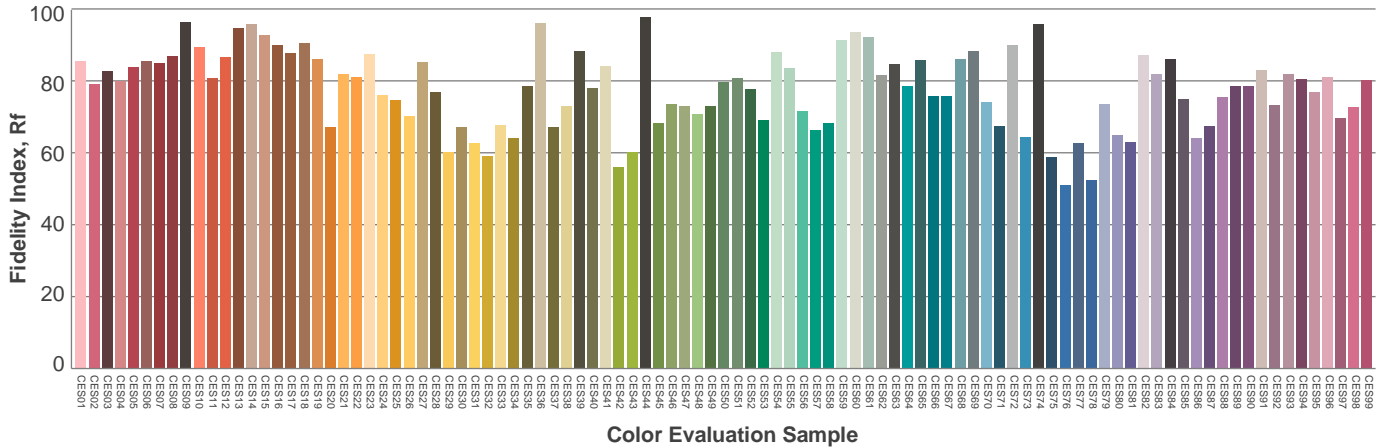
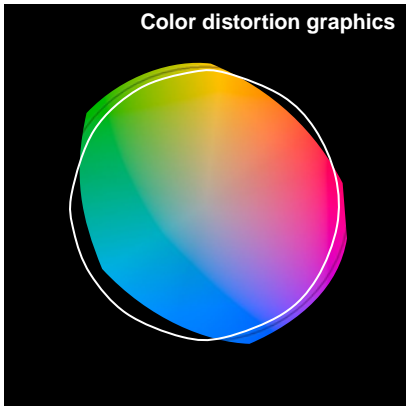
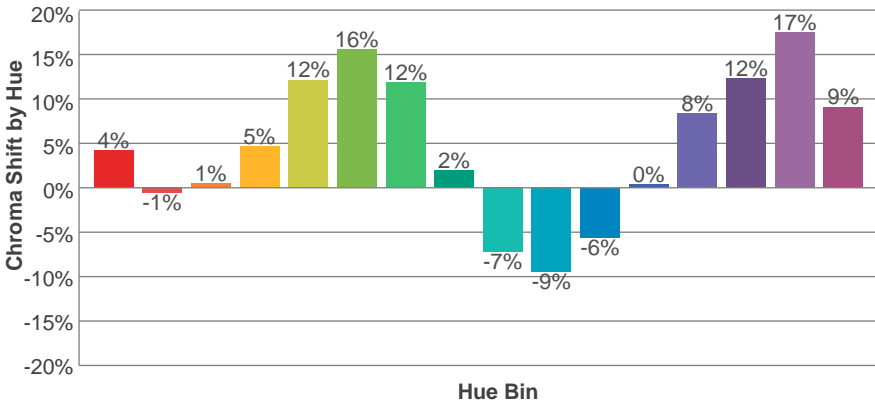
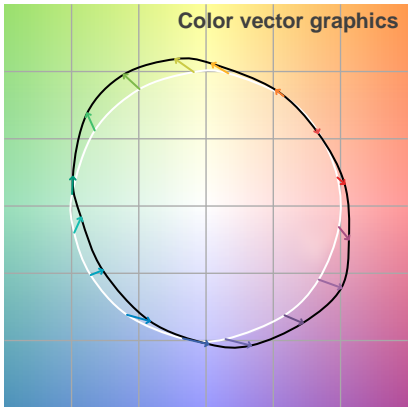
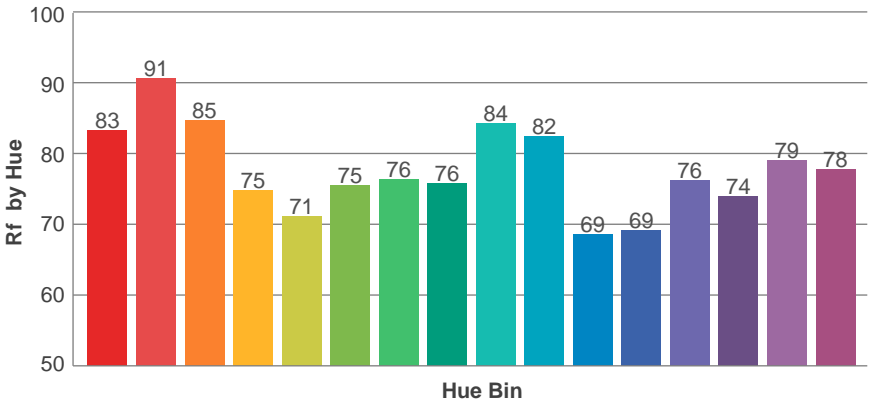
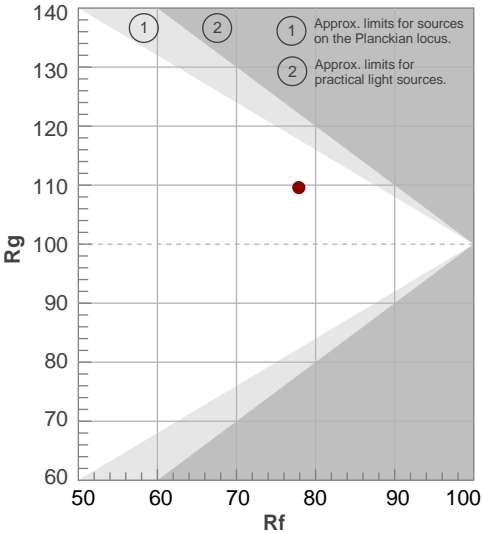
Rf 77.9

Fidelity Index Rf

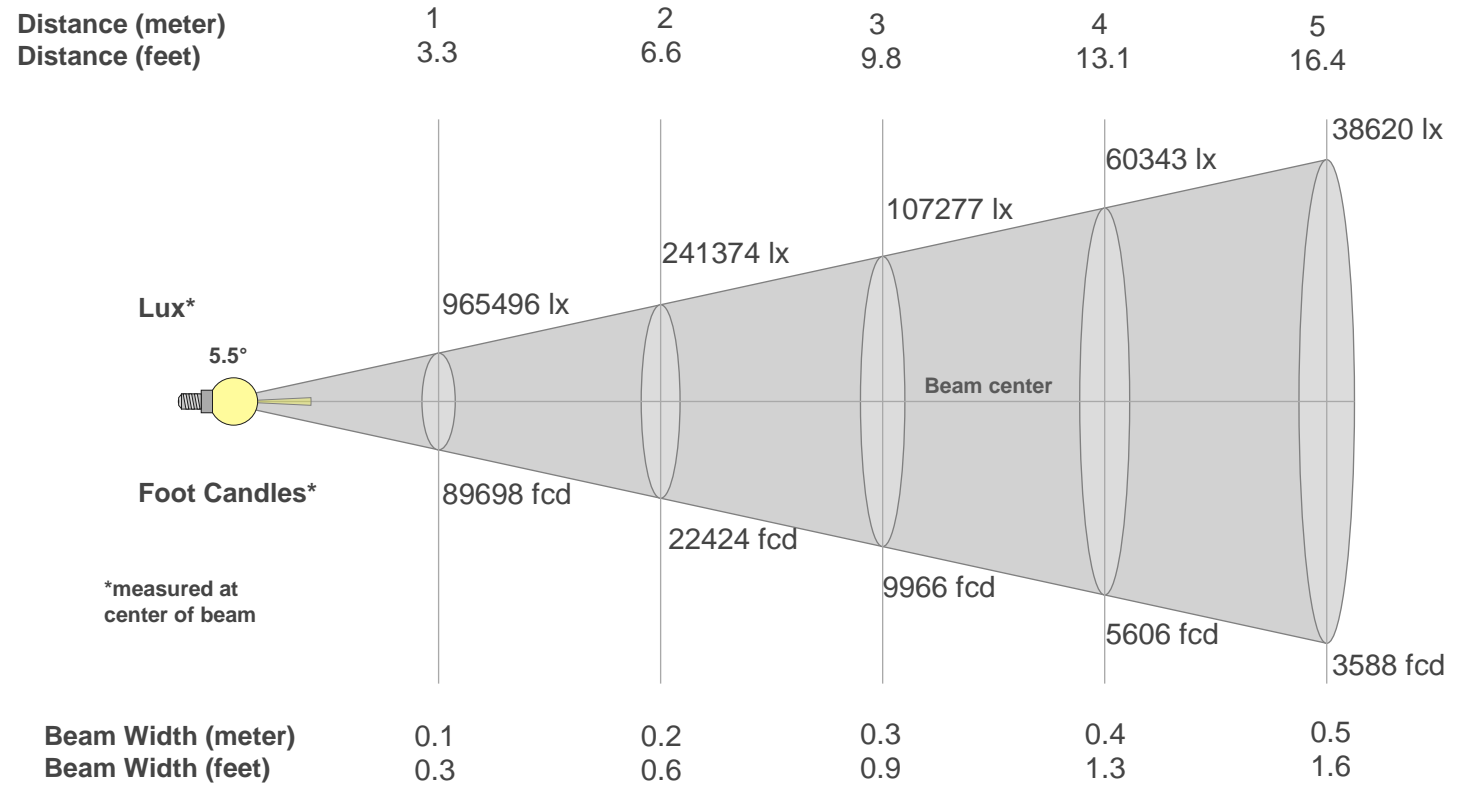
Rg 109.6

Gamut Index Rg

		Graphic shifts (%)	
Hue Bin	Rf	Chroma	Hue
1	83	4%	-6%
2	91	-1%	-3%
3	85	1%	7%
4	75	5%	13%
5	71	12%	12%
6	75	16%	4%
7	76	12%	-7%
8	76	2%	-13%
9	84	-7%	-10%
10	82	-9%	2%
11	69	-6%	17%
12	69	0%	19%
13	76	8%	18%
14	74	12%	8%
15	79	17%	4%
16	78	9%	-8%



Beam Details



Beam Intensities from 1-20m																				
M	1	2	3	4	5	6	7	8	9	10	11	12	13	14	15	16	17	18	19	20
Ft	3.3	6.6	9.8	13.1	16.4	19.7	23	26.2	29.5	32.8	36.1	39.4	42.7	45.9	49.2	52.5	55.8	59.1	62.3	65.6
Lx	965496	241374	107277	60343	38620	26819	19704	15086	11920	9655	7979	6705	5713	4926	4291	3771	3341	2980	2675	2414
Fcd	89697.5	22424.4	9966.4	5606.1	3587.9	2491.6	1830.6	1401.5	1107.4	897	741.3	622.9	530.8	457.6	398.7	350.4	310.4	276.8	248.5	224.2

Intensities in 0° C-plane																			
0°	1°	2°	3°	4°	5°	6°	7°	8°	9°	10°	11°	12°	13°	14°	15°	16°	17°	18°	19°
965K	941K	760K	374K	61K	3K	1K	0K	0K	0K	0K	0K	0K	0K	1K	1K	1K	1K	1K	0K
100%	97%	79%	39%	6%	0%	0%	0%	0%	0%	0%	0%	0%	0%	0%	0%	0%	0%	0%	0%

Intensities in 90° C-plane																				
0°	1°	2°	3°	4°	5°	6°	7°	8°	9°	10°	11°	12°	13°	14°	15°	16°	17°	18°	19°	
965K	941K	760K	374K	61K	3K	1K	0K	0K	0K	0K	0K	0K	0K	1K	1K	1K	1K	1K	0K	
100%	97%	79%	39%	6%	0%	0%	0%	0%	0%	0%	0%	0%	0%	0%	0%	0%	0%	0%	0%	

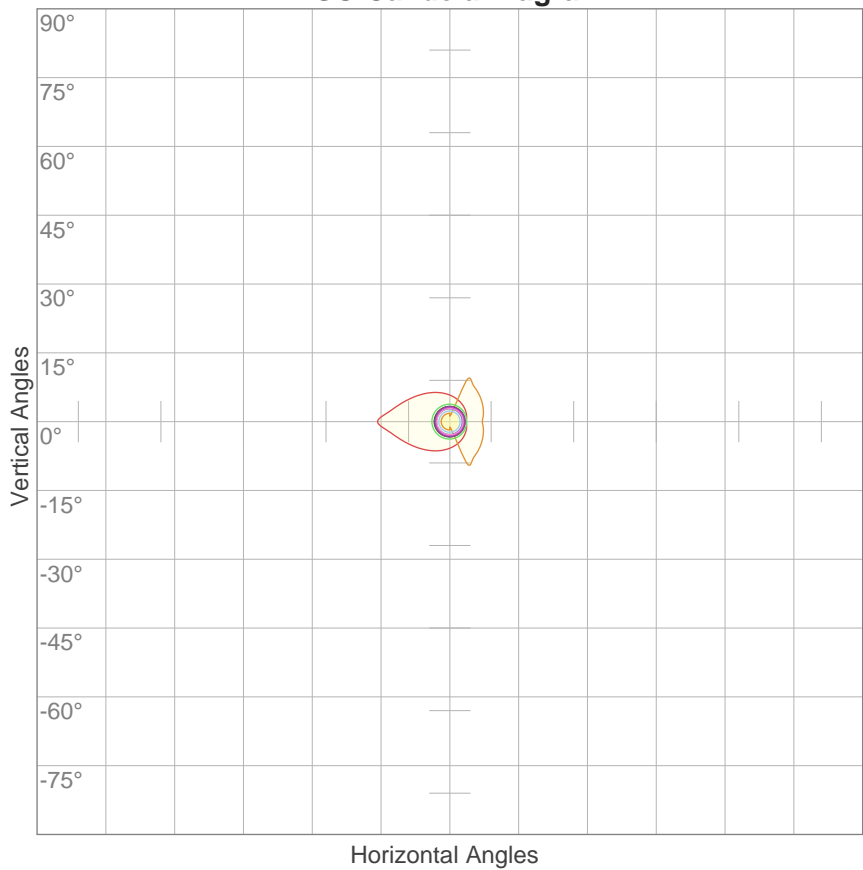
Intensities in 180° C-plane																			
0°	1°	2°	3°	4°	5°	6°	7°	8°	9°	10°	11°	12°	13°	14°	15°	16°	17°	18°	19°
965K	960K	789K	368K	89K	7K	1K	0K	0K	0K	0K	0K	0K	0K	0K	0K	1K	1K	1K	1K
100%	99%	82%	38%	9%	1%	0%	0%	0%	0%	0%	0%	0%	0%	0%	0%	0%	0%	0%	0%

Intensities in 270° C-plane																			
0°	1°	2°	3°	4°	5°	6°	7°	8°	9°	10°	11°	12°	13°	14°	15°	16°	17°	18°	19°
965K	960K	789K	368K	89K	7K	1K	0K	0K	0K	0K	0K	0K	0K	0K	0K	1K	1K	1K	1K
100%	99%	82%	38%	9%	1%	0%	0%	0%	0%	0%	0%	0%	0%	0%	0%	0%	0%	0%	0%

Beam Angle 50%	Field Angle 10%	Cutoff Angle 2,5%	Intensity Ratio in 120° Cone	Intensity Ratio in 90° Cone
5.5°	7.8°	8.9°	98.9%	98.5%

ISO Diagrams

ISO Candela Diagram



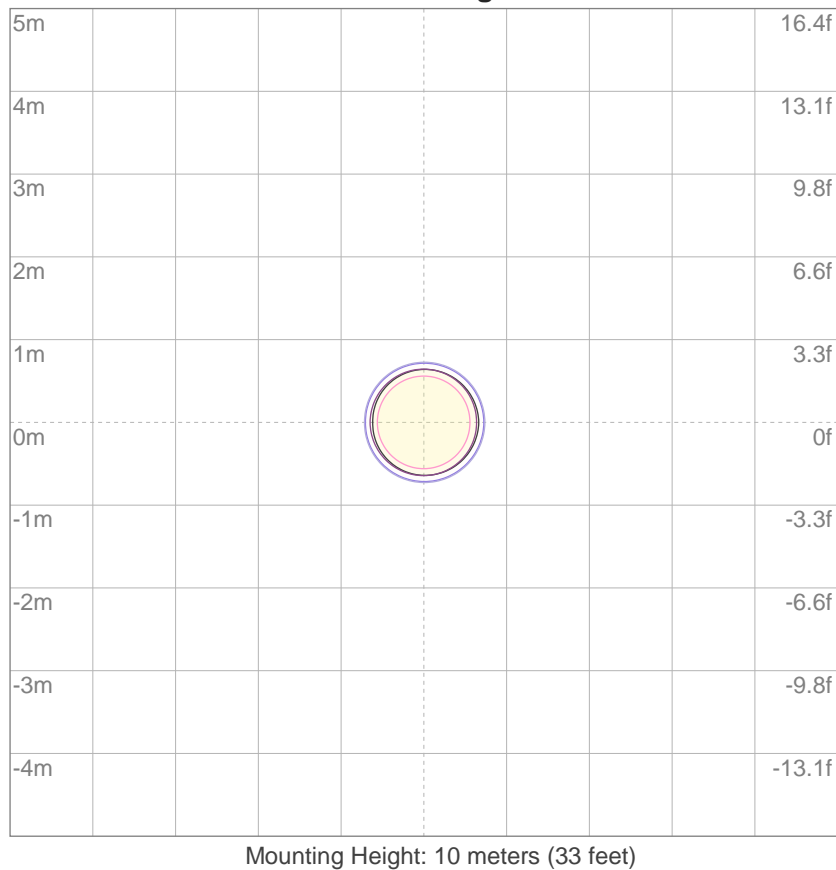
10%	96550 cd
20%	193099 cd
30%	289649 cd
40%	386198 cd
50%	482748 cd
60%	579298 cd
70%	675847 cd
80%	772397 cd
90%	868946 cd

Conditions:

Number of c-planes: 2

Candela at center: 965496 cd

ISO Lux Diagram



3%	290 lx
5%	483 lx
10%	965 lx
30%	2896 lx
50%	4827 lx

Conditions:

Number of c-planes: 2

Lux at center: 9655 lx

*Lux distribution on a surface
when lamp is mounted at 10
meters from the surface.*

Light Planning

Coefficients of Utilization

Ceiling Reflectance	80				70				50			30			10			0
Wall Reflectance	70	50	30	10	70	50	30	10	50	30	10	50	30	10	50	30	10	0
Floor Reflectance	20	20	20	20	20	20	20	20	20	20	20	20	20	20	20	20	20	0
RCR	(RCR: Room Cavity Ratio) Room Values are expressed as percentage of Lumens delivered to the task surface																	
0	119	119	119	119	116	116	116	116	111	111	111	106	106	106	101	101	101	99
1	116	115	113	112	114	113	111	110	108	108	107	105	104	103	101	101	100	99
2	114	111	109	108	112	110	108	106	107	105	104	104	103	102	101	100	100	98
3	112	109	107	105	110	108	106	104	105	104	102	103	102	101	101	100	99	98
4	111	107	105	103	109	106	104	102	104	102	101	102	101	100	101	100	99	98
5	109	106	103	101	108	105	102	101	103	101	100	102	100	99	101	99	98	97
6	108	104	102	100	107	104	101	100	103	101	99	101	100	99	100	99	98	97
7	107	103	101	99	106	103	101	99	102	100	99	101	99	98	100	99	98	97
8	106	103	100	99	105	102	100	98	101	99	98	101	99	98	100	98	97	97
9	105	102	100	98	105	102	99	98	101	99	98	100	99	97	100	98	97	97
10	105	101	99	98	104	101	99	98	100	99	97	100	98	97	99	98	97	96

Zonal Lumen Summary

0°-10°	10°-20°	20°-30°	30°-40°	40°-50°	50°-60°	60°-70°	70°-80°	80°-90°
7684 lm	139 lm	111 lm	58.5 lm	36.2 lm	20.9 lm	13.2 lm	8.42 lm	6.49 lm

90°-100°	100°-110°	110°-120°	120°-130°	130°-140°	140°-150°	150°-160°	160°-170°	170°-180°
6.28 lm	4.56 lm	5.32 lm	8.37 lm	11.2 lm	8.70 lm	8.11 lm	4.87 lm	0.692 lm